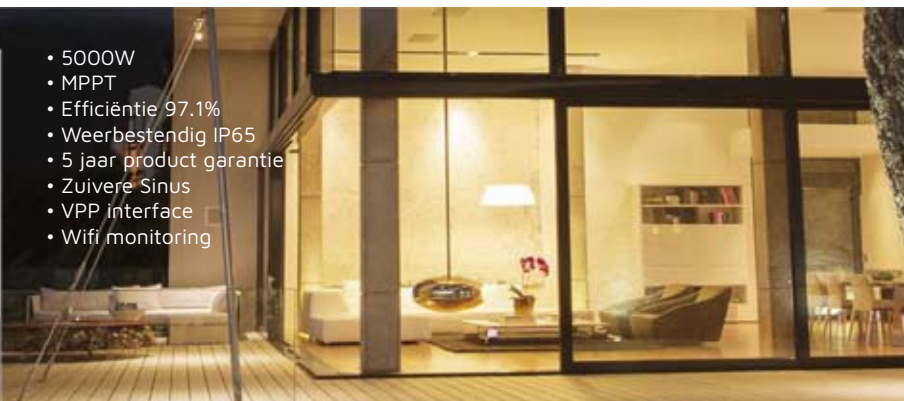




- 5000W
- MPPT
- Efficiëntie 97.1%
- Weerbestendig IP65
- 5 jaar product garantie
- Zuivere Sinus
- VPP interface
- Wifi monitoring



Growatt

DC input data	
Max. PV power	8000W
Start voltage	150V
Max. PV voltage	550V
PV voltage range	120V-550V
MPPT voltage range	150V-550V
Max. input current of tracker A/B	13.5A/13.5A
Number of MPP trackers	2
AC Output	
Rated AC output power	4999W
Max. AC apparent power	5000VA
STC	Irradiance 1000W/m ² , cell temperature 25°C, AM1.5G
Max. Power(Pmax) [Wp]	302
Open Circuit Voltage	38.8
Max. output current	22A
Nominal AC output voltage	230V
Nominal grid frequency	50/60Hz, ±5Hz
Power factor at rated power	1
Displacement power factor	0.8leading...0.8lagging
THDI	<3%
AC output power (Backup)	
Max. output power	3000W
Rated AC output voltage	230VAC
Rated AC output frequency	50/60Hz
Automatic switchover time	<0.5S
Battery data	
Battery voltage range	42-59V
Max. charging voltage	58V
Max. charging and discharging	66A
Max charging and discharging	3000W
Battery type	Lithium /Lead-acid
Capacity of battery	50-2000Ah

Efficiency	
Max. efficiency	97.1%
MPPT efficiency	99.9%
Protection devices	
DC switch	V
DC reverse polarity protection	V
Battery reverse protection	V
Output over current protection	V
Output over voltage protection	V
Ground fault monitoring	V
Grid monitoring	V
Integrated all-pole sens. leakage	Irradiance 1000W/m ² , cell temperature 25°C, AM1.5G
General Data	
Dimensions (W / H / D)	458x565x180mm
Weight	27kg
Operating temperature range	-25°C ... +60°C
Altitude	2000m
Self-Consumption	< 3 W
Topology (solar)	Transformerless
Topology (battery)	HF transformer
Cooling concept	Natural
Environmental Protection Rating	IP65
Relative humidity	100%
DC connection	MC4/H4 (Optional)
AC connection	Connector
Interface RS232/RS485/CAN/USB	Connector
Monitor : RF/WIFI/GPRS	Optional
Display	LCD+LED

Technische Specificaties